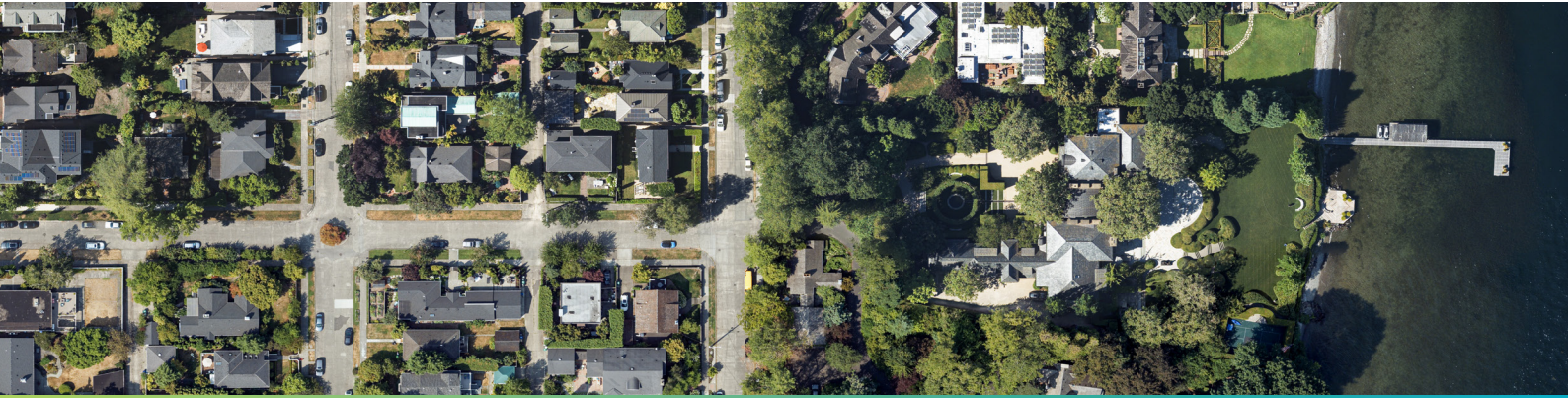


HxGN Content Program

Orthophoto Specifications



Ortho - Wide Area Coverage (WAC)

Product	Ortho - Wide Area Coverage (WAC) - North America & Europe		
Resolution	30 cm		
Accuracy Specification	RMSE _{x/y} = 1.2 m RMSE _r = 1.7 m CE90 = 2.6 m CE95 = 3.0 m		
Delivery Medium	Webstore Download 1) Viewer AOI 2) Shapefile <no holes allowed>	Web Streaming OGC WMS / WMTS ArcGIS REST/SOAP Licensed by geofenced areas (Zones) - the default Zone equals a Country.	Custom Order 1) Large corridor 2) Orders bigger than the Webstore online delivery (~100GB), and/or custom projections/formats
Format	GeoTIFF, TIFF, JPG, PNG	JPG, PNG, GIF	GeoTIFF
Coordinate Reference System	NAD 1983-2011-StatePlane-<State> both ft/m WGS84 - UTM Zone <#> (native and adjacent zones) NAD83 (2011) - UTM Zone <#> (native and adjacent zones)	Dynamically projected on-the-fly based on the application's request. A list is retrieved by applications using the "request=GetCapabilities" call to the streaming endpoint URL.	NAD83 (2011) - UTM Zone <#> (native only) Additional coordinate reference systems available upon request.
Delivery Time Frame	Immediate	Immediate	1 to 4 weeks based on the specifications, order size and vintage
Minimum Order	Based on web store minimum	Single user licence	Minimum may apply
Comments	Native UTM Zone is the UTM majority zone used for processing the data. Two sets of 3-band delivered, 1 set of RGB, and one set of CIR.	As of today, it is around 475 variations of CRS supported.	Delivery is a single 4 band product. Additional coordinate reference systems available upon request.

Ortho - Urban Area Coverage (UAC)

Product	Ortho - Urban Area Coverage (UAC) - North America		
Resolution	15 cm		
Accuracy Specification	RMSE _{x/y} = 0.50 m RMSE _r = 0.71 m CE ₉₀ = 1.07 m CE ₉₅ = 1.22 m		
Delivery Medium	Webstore Download : 1) by Viewer AOI, and 2) Shapefile < no holes allowed >	Web Streaming : OGC WMS / WMTS and ArcGIS REST/ SOAP. Licensed by geofenced areas (Zones). The default Zone equals a Country.	Custom Order : 1) large corridor, 2) orders bigger than the Webstore online delivery (~100GB), and/or custom projections / formats.
Format	GeoTIFF, TIFF, JPG, PNG	JPG, PNG, GIF	GeoTIFF
Coordinate Reference System	NAD 1983-2011-StatePlane- <State> both ft/m WGS84 - UTM Zone <#> (native and adjacent zones) NAD83 (2011) - UTM Zone <#> (native and adjacent zones)	Dynamically projected on-the-fly based on the application's request. A list is retrieved by applications using the "request=GetCapabilities" call to the streaming endpoint URL.	NAD83 (2011) - UTM Zone<#> (native only) Additional coordinate reference systems available upon request.
Delivery Time Frame	Immediate	Immediate	1 to 4 weeks based on the specifications, order size and vintage
Minimum Order	Based on web store minimum	Single user licence	Minimum may apply
Comments	Native UTM Zone is the UTM majority zone used for processing the data. Two sets of 3-band delivered, 1 set of RGB, and one set of CIR.	As of today, it is around 475 variations of CRS supported.	Delivery is a single 4 band product. Additional coordinate reference systems available upon request.

HxGN Content Program

The HxGN Content Program meets the growing demand for high-quality, regularly updated geospatial content to power intelligent decision making. Collaborating with experienced collection partners, the most extensive image library in North America and Europe offers easy access to high-resolution, professional base maps for download or streaming. hxgncontent.com